



QUALITYSTEELPRODUCTS

4978 Technical Drive - Milford, MI 48381 - 248.684.0555



Conveyor Chain Product Catalog



CHAIN LINKS • PINS • PUSHER DOGS • ACCESSORIES

ABOUT

Quality Steel Products has been manufacturing and assembling forged conveyor chain for over 30 years. Our management was involved in developing and writing standards for the industry that are still used today. Many OEMs in various industries specify Quality Steel Products due to our reputation for manufacturing superior products.

Our manufacturing capabilities include:

- * Saw Cutting and Shearing
- * Forging
- * Shot Blasting
- * Heat Treating
- * CNC Machining
- * In House Tool and Die
- * Assembly

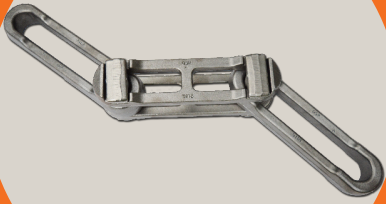
We purchase steel exclusively from North American steel mills that have the capability to meet or exceed our specifications. Our chain products are produced using various Carbon, Alloy or Micro Alloy Steel. Our quality control department measures our products using a coordinate measuring machine, CMM, to insure parts meet tolerance specification. Additionally, we use Brinell Hardness testing to confirm products meet the required hardness range. Conveyor chain strands can be pull-tested to confirm proper assembly.

Since we are the manufacturer and produce our own tooling, we can provide both industry standard chain products as well as custom solutions for your application. **Below are examples of markets that our conveyor chain is currently being used:**

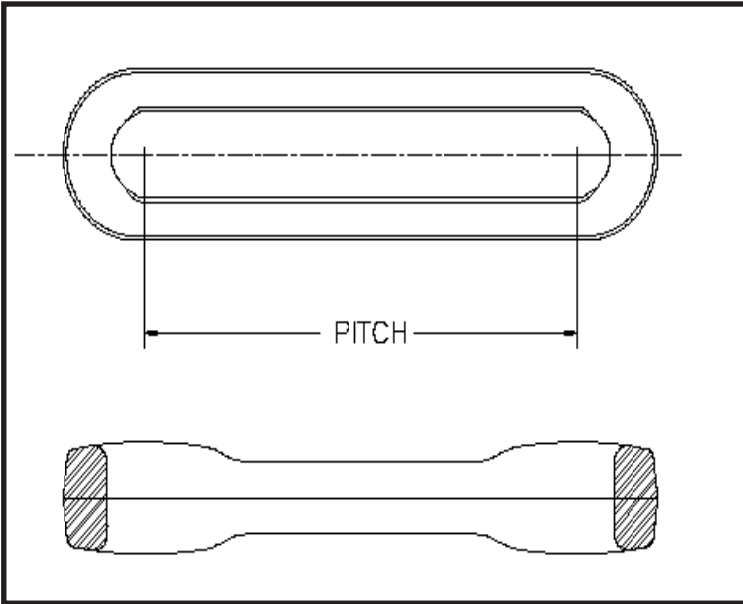
- * Automotive Assembly
- * Forestry
- * Mining Operations
- * Postal and Distribution Facilities
- * Sugar Mills
- * Various Industrial Facilities
- * Car Wash Lines
- * Livestock and Poultry
- * Paint and E Coat Lines
- * Power and Energy Plants
- * Truck and Tractor Assembly



Our catalog lists the most commonly used conveyor chain products. Please contact us if you don't see your product listed or would like to discuss a custom solution for your company.



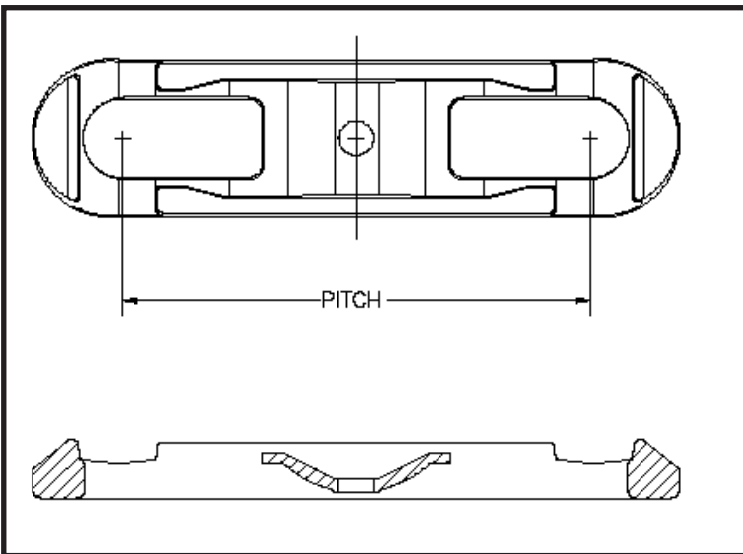
CHAIN LINKS



CENTER-LINK

Pitch Length

348	3"
X-458	4"
468	4"
658	6"
X-678	6"
698	6"
998	9"
9118	9"



SIDE-LINK

Pitch Length

348	3"
X-458	4"
468	4"
658	6"
X-678	6"
698	6"
998	9"
9118	9"



QUALITYSTEELPRODUCTS

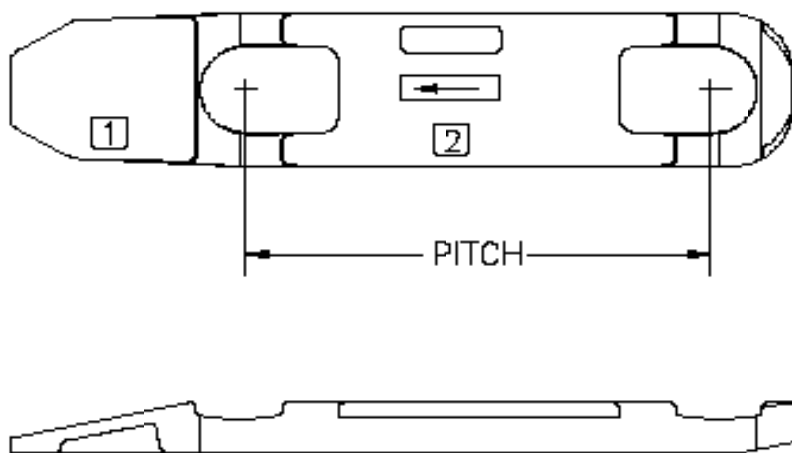
4978 Technical Drive - Milford, MI 48381 - 248.684.0555



CHAIN LINKS

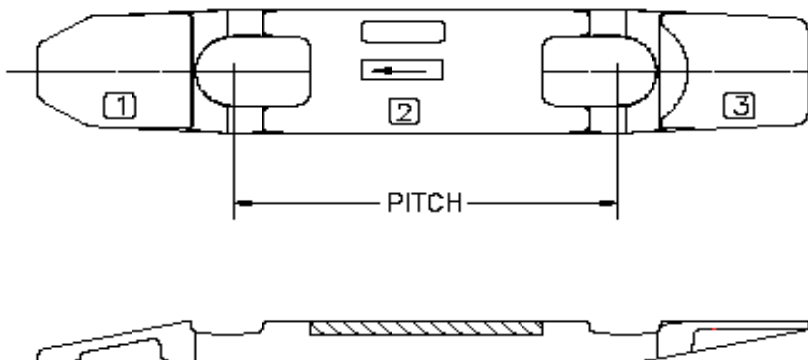
LOW PROFILE LEADING TOP LINK

Pitch Length: 4"



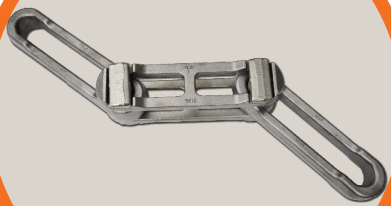
LOW PROFILE TOP LINK

Pitch Length: 4"



QUALITYSTEELPRODUCTS

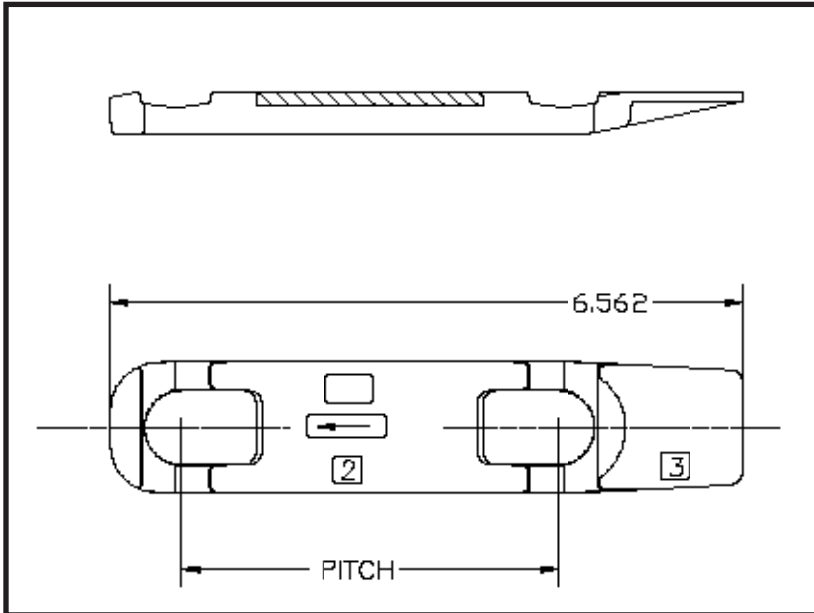
4978 Technical Drive - Milford, MI 48381 - 248.684.0555



CHAIN LINKS

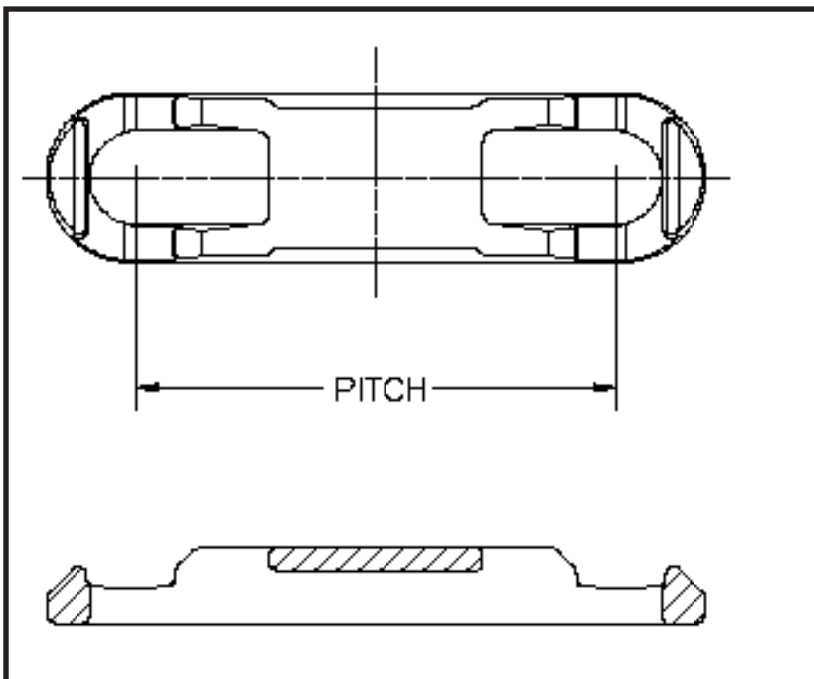
LOW PROFILE TRAILING LINK

Pitch Length: 4"



LOW PROFILE BOTTOM LINK

Pitch Length: 4"

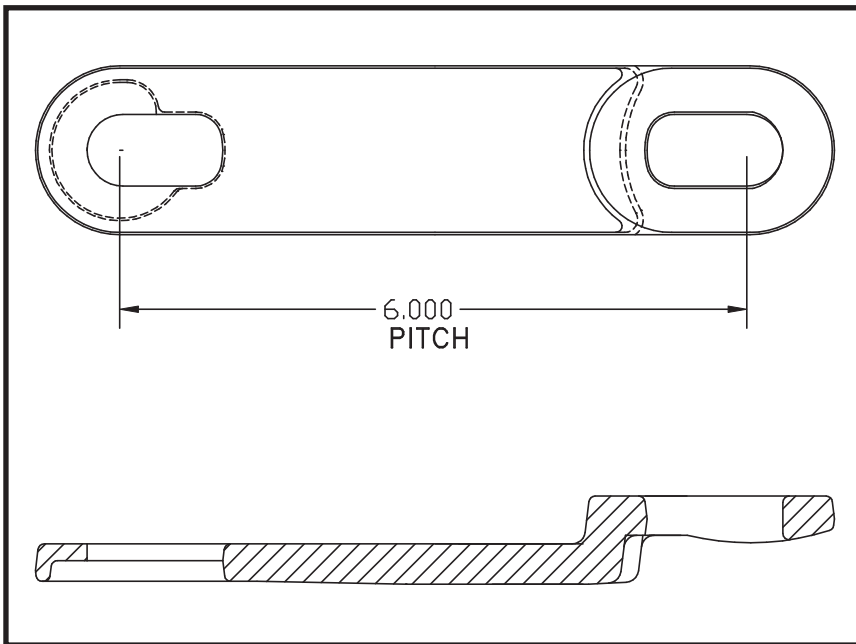


QUALITYSTEELPRODUCTS

4978 Technical Drive - Milford, MI 48381 - 248.684.0555

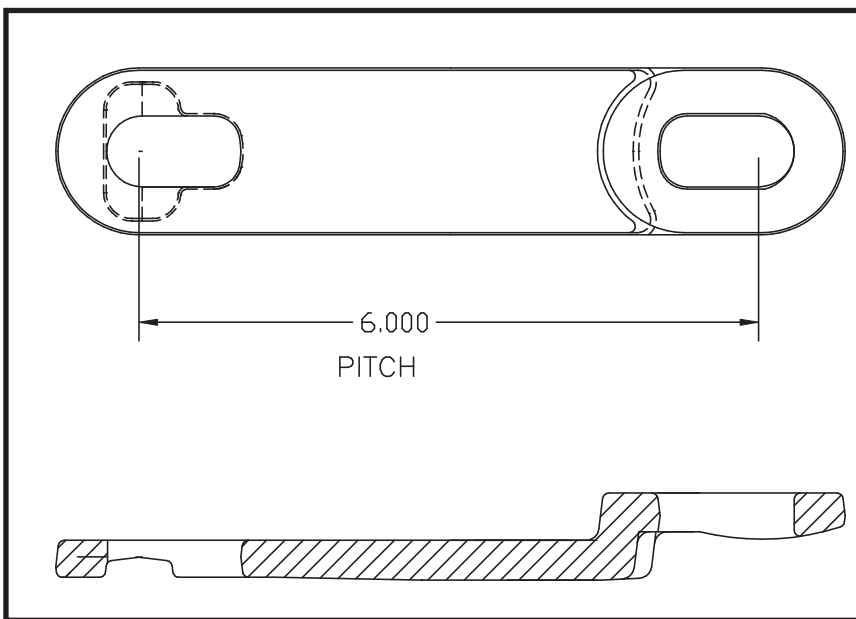


CHAIN LINKS



X-658 L.S.T. TOP LINK

Pitch Length: 6"



X-658 L.S.T. BOTTOM LINK

Pitch Length: 6"



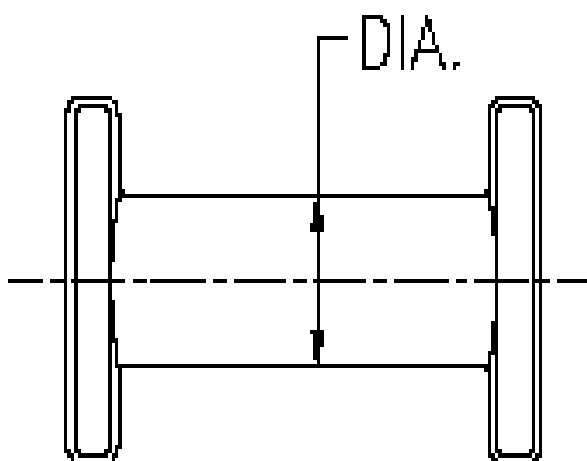
QUALITYSTEELPRODUCTS

4978 Technical Drive - Milford, MI 48381 - 248.684.0555



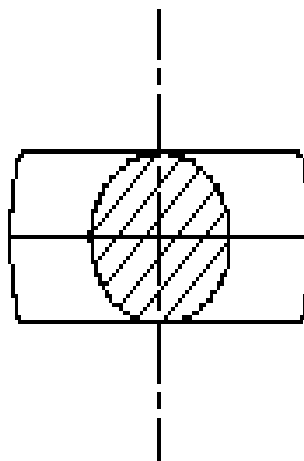
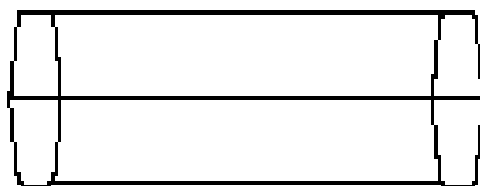
PINS

STANDARD PIN



Pin Diameter

348	1/2"
X-458	5/8"
468	3/4"
658	5/8"
X-678	7/8"
698	1.125"
998	1.125"
9118	1.375"

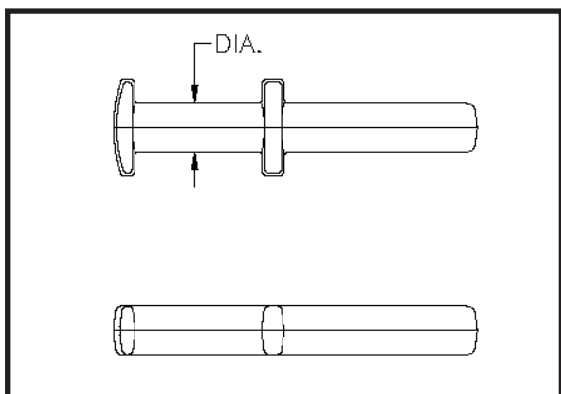




PINS

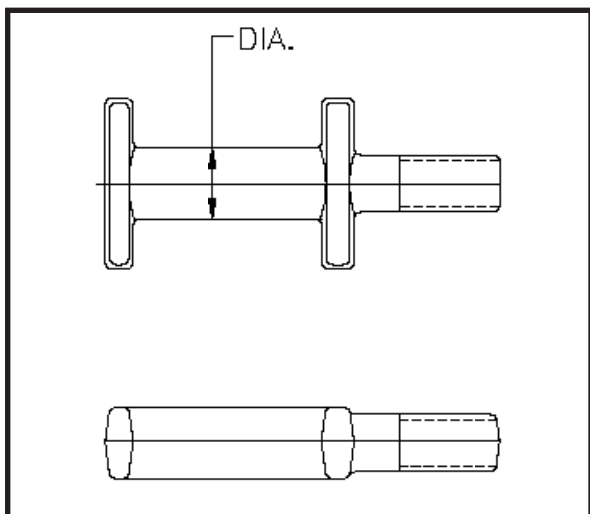
348 EXTENDED PIN

Pin Diameter: 1/2"



458 EXTENDED PIN

Pin Diameter: 5/8"

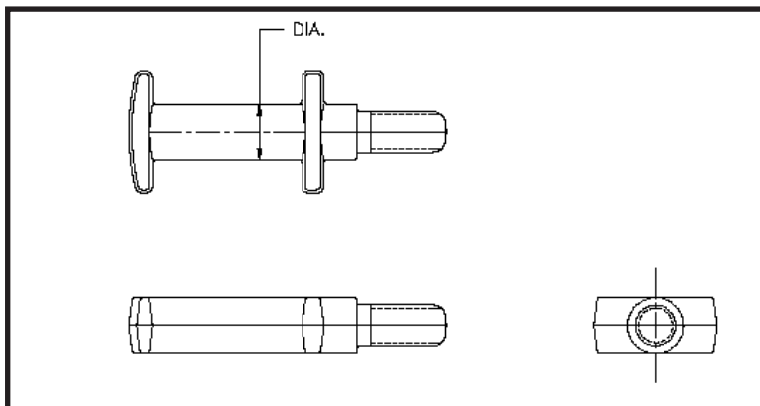


678 EXTENDED PIN

Pin Diameter: 7/8"

Pin Length: 1.375"

Pin Length: 1.875"

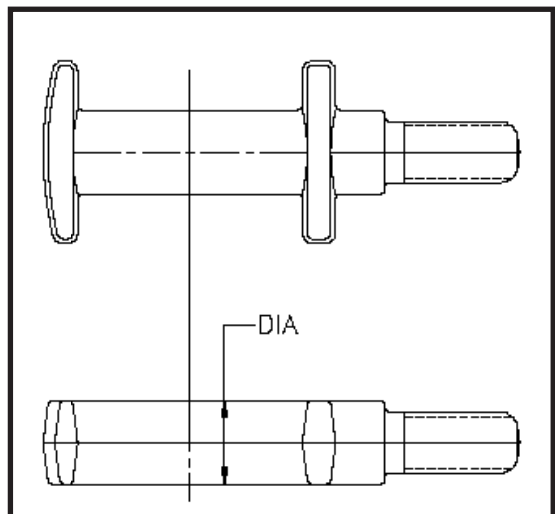


QUALITYSTEELPRODUCTS

4978 Technical Drive - Milford, MI 48381 - 248.684.0555



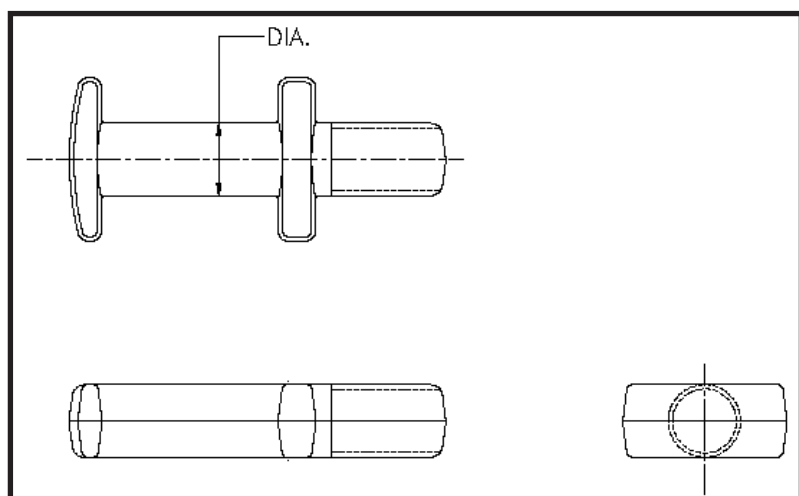
PINS



EXTENDED PINS

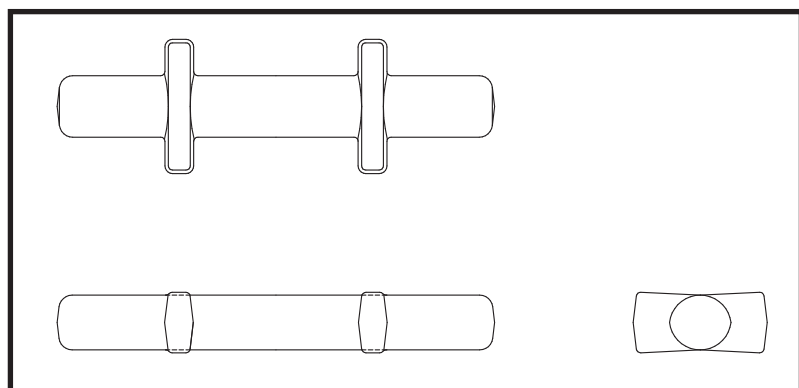
Pin Diameter

458	5/8"
678	7/8"
698	1.125"
998	1.125"



698/998 EXTENDED PIN

Pin Diameter: 1 1/8"



678 DOUBLE EXTENDED PIN

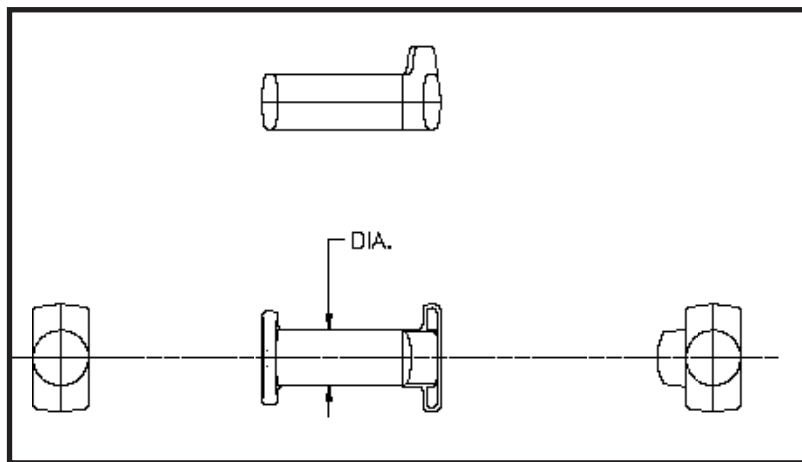


QUALITYSTEELPRODUCTS

4978 Technical Drive - Milford, MI 48381 - 248.684.0555

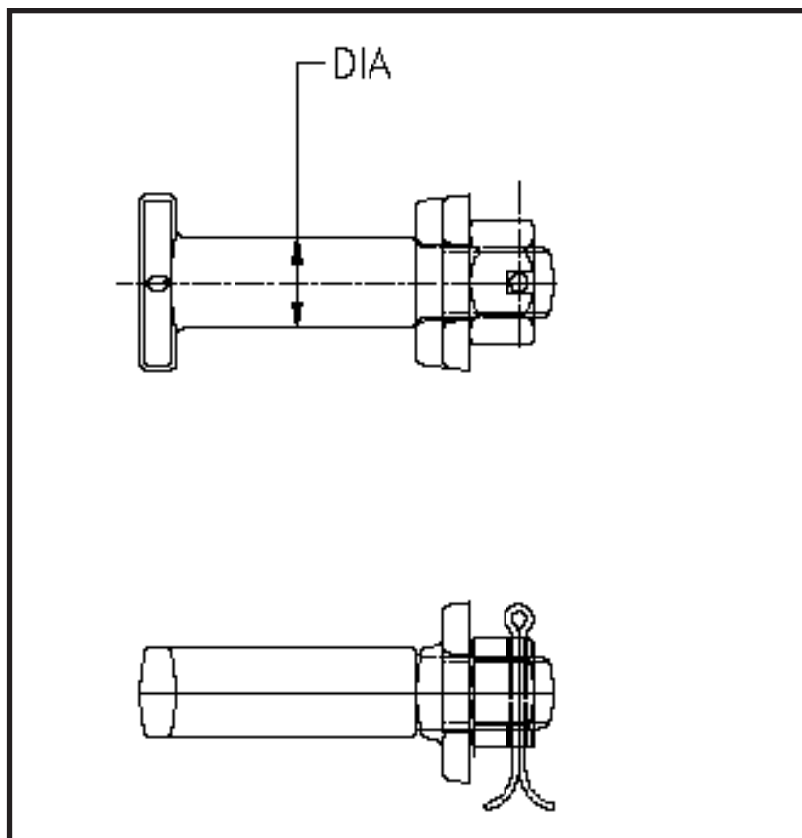


PINS



LOW PROFILE PIN

Pin Diameter: 5/8"



MASTER PIN ASSEMBLY

Pin Diameter

X-458	5/8"
658	5/8"

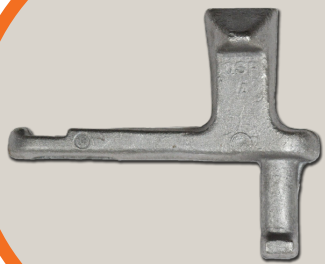
COMPONENTS

Master Pin
Master Pin Washer
Flat Washer
Cotter Pin
Castle Nut



QUALITYSTEELPRODUCTS

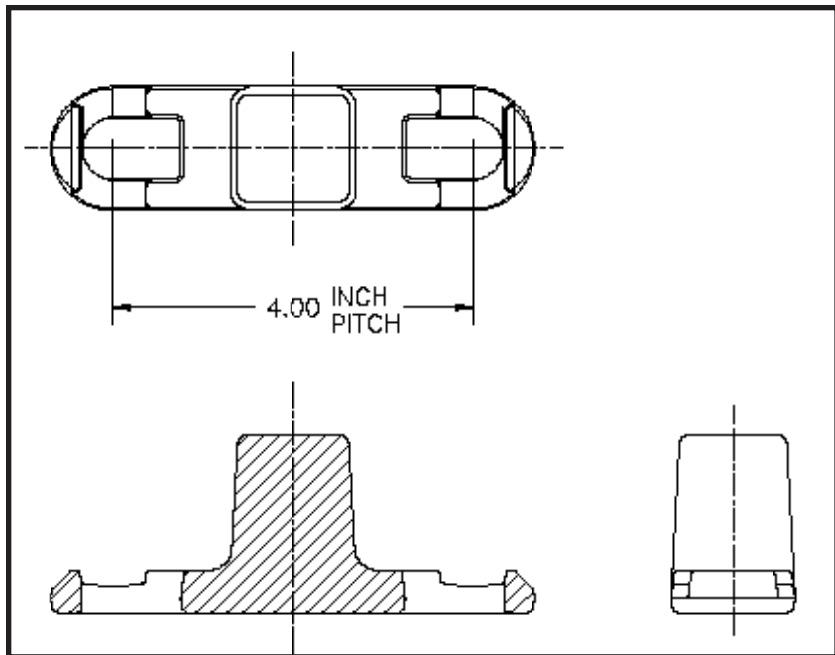
4978 Technical Drive - Milford, MI 48381 - 248.684.0555



PUSHER DOGS

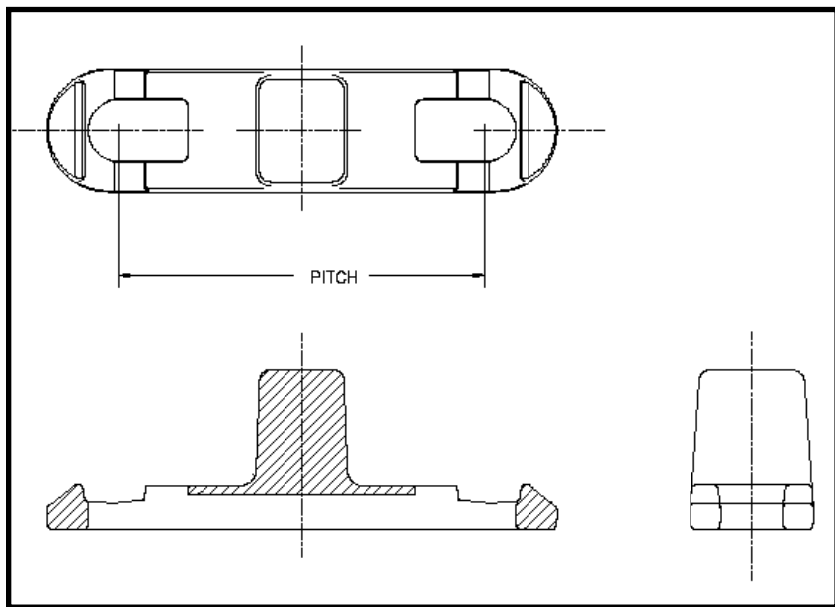
458 SIDE LINK PUSHER DOG

Pitch Length: 4"



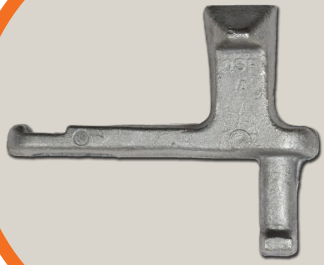
678 SIDE LINK PUSHER DOG

Pitch Length: 6"

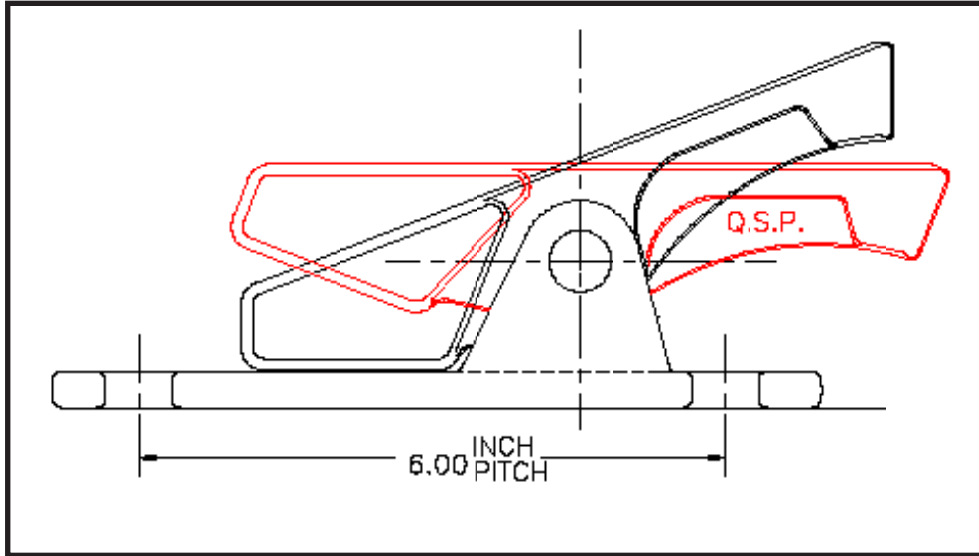


QUALITYSTEELPRODUCTS

4978 Technical Drive - Milford, MI 48381 - 248.684.0555

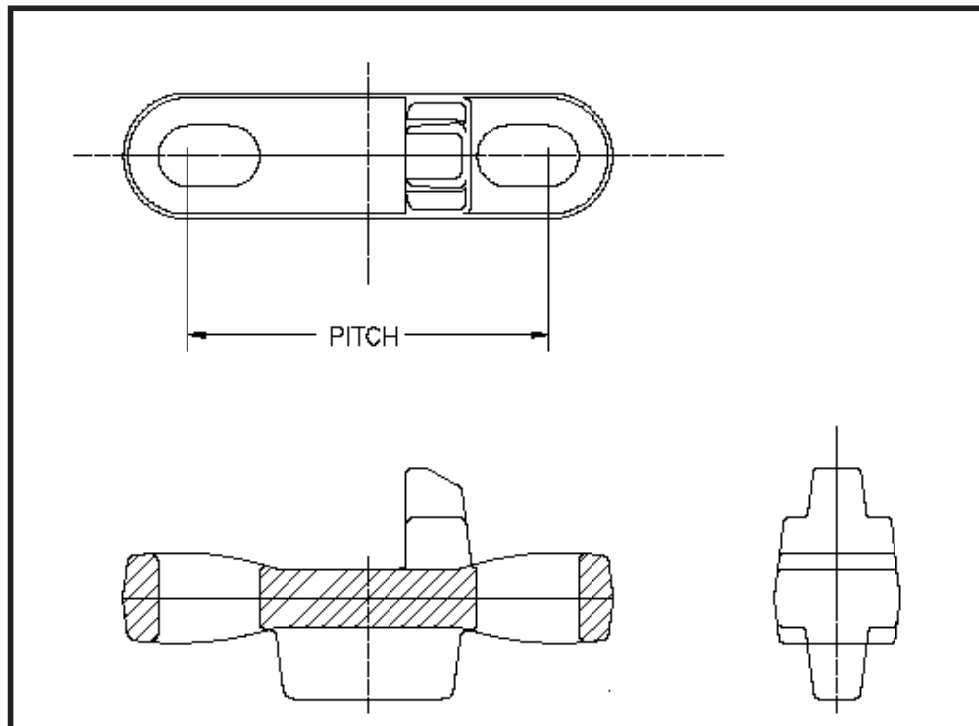


PUSHER DOGS



678 FLOP PUSHER DOG

Pitch Length: 6"



LOW PROFILE CENTER LINK PUSHER DOG

Pitch Length: 4"

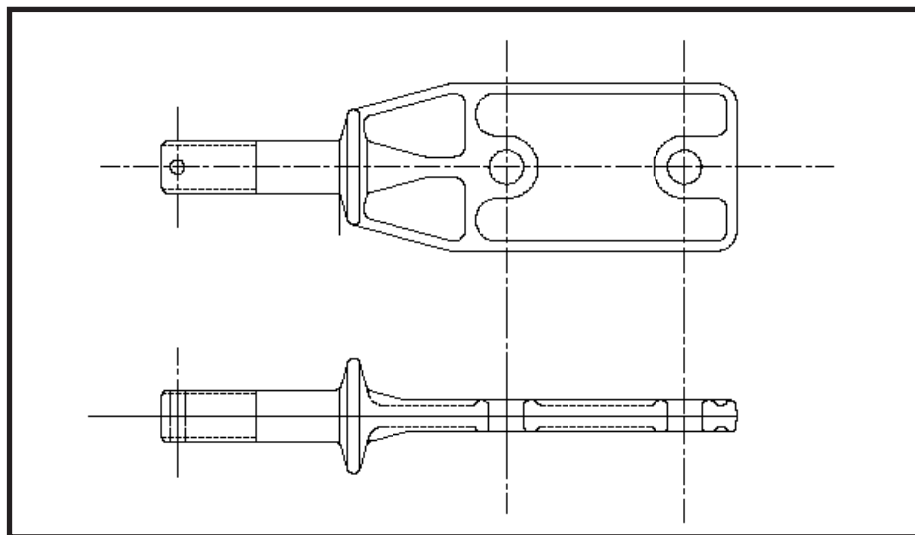


QUALITYSTEELPRODUCTS

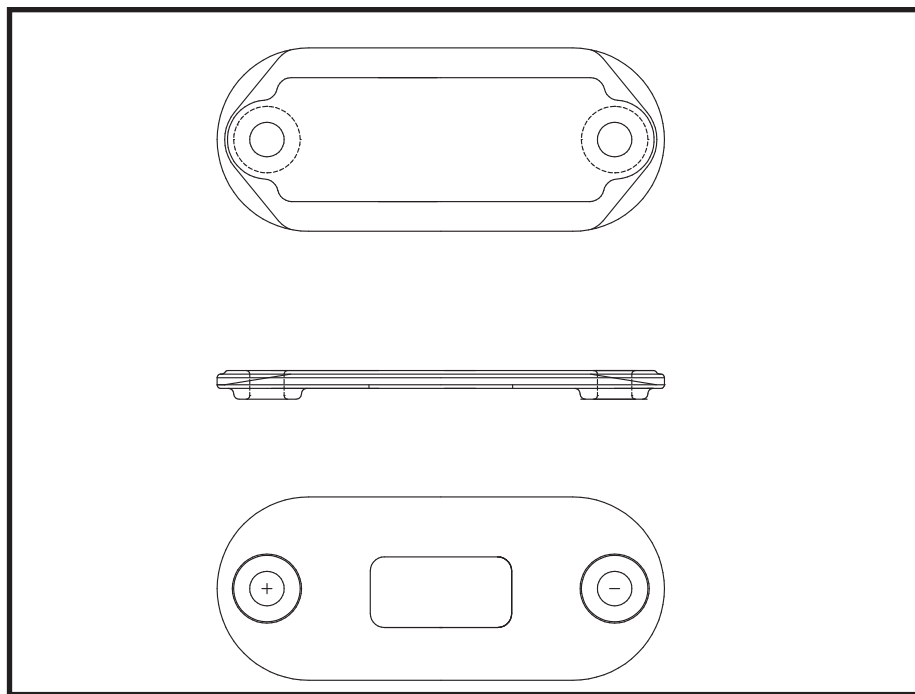
4978 Technical Drive - Milford, MI 48381 - 248.684.0555



ACCESSORIES



458-B ATTACHMENT



658 RIDER PLATE

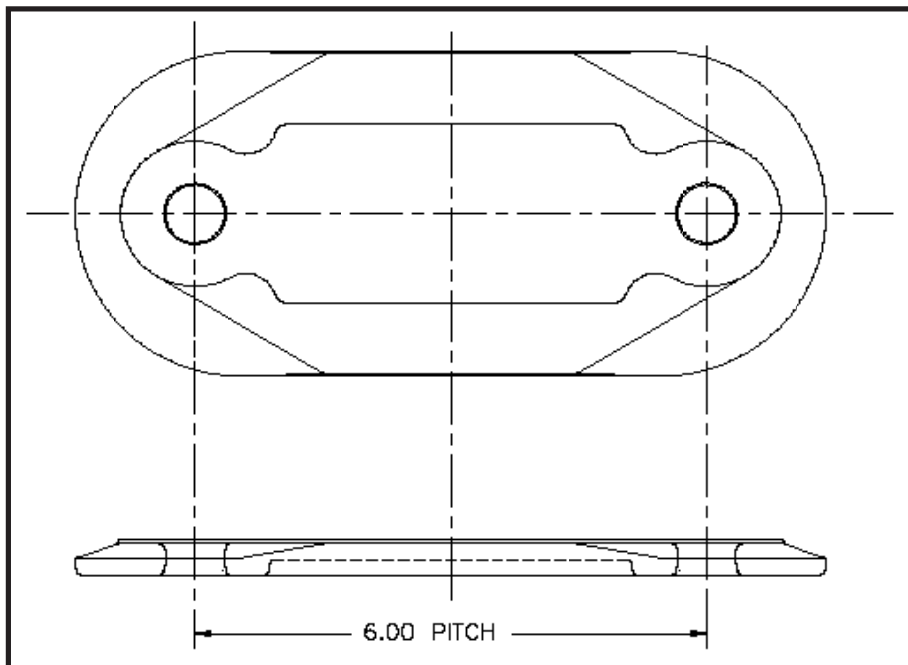


QUALITYSTEELPRODUCTS

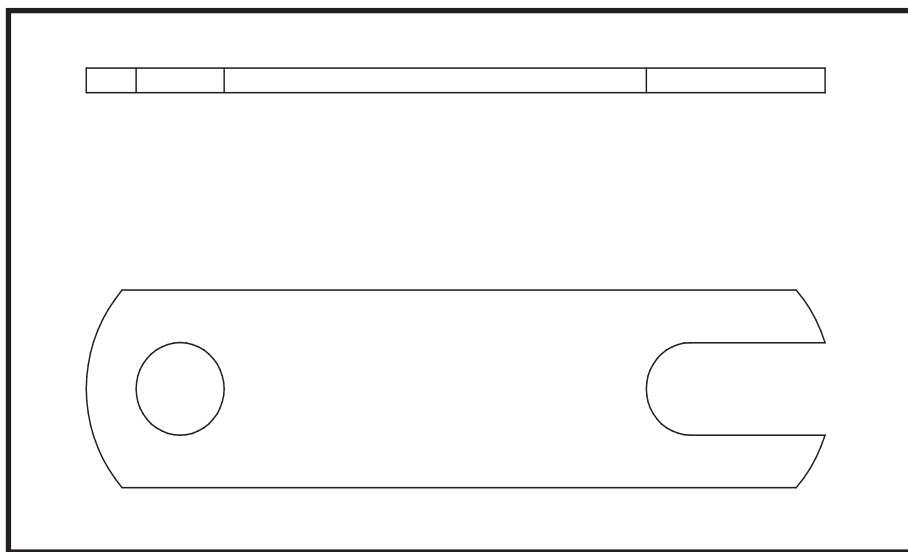
4978 Technical Drive - Milford, MI 48381 - 248.684.0555



ACCESSORIES



678 RIDER PLATE



678 FILLER BAR



QUALITYSTEELPRODUCTS

4978 Technical Drive - Milford, MI 48381 - 248.684.0555